



LUNG YUN CASTING CO., LTD
Foundry:
63, Yu shih Road, Jih Nan Li, Tachia Dist., Taichung City 437, Taiwan
Mechanical Factory:
20, Gong-3 Rd., Jih Nan Li, Tachia Dist., Taichung City 437, Taiwan
TEL: +886-4-2681 7600 FAX: +886-4-2681 3474
http://www.lungyun.com E-mail: inquiry@lungyun.com.tw



lungyun

<http://www.lungyun.com>



龍雲鑄造股份有限公司
LUNG YUN CASTING CO., LTD

調壓閥特性

Pressure Regulator Features

KNOB HANDLE ADJUSTMENT

Knob Stop Design Prevents the Stork Of The Diaphragm

VENT

The Vent Design Is To Ensure The Regulator System Works Normally

PANEL MOUNTING

Panel Mounting Is An Option

BODY DESIGN

Two Pieces Body Design Is For Easy Maintenance

BODY MATERIAL

Stainless Steel 316L For Better Corrosion Resistance And Wide Application

STEM

Stem Threads With Close Tolerance Provide Better Adjustability

SPRING

Based On Professional Calculation And Repeated Testing,The Spring Is Designed For Applying In a Wide Range Of Flow Rates

DIAPHRAGM

Metal To Metal Design Is Convolute Diaphragm Provide Longer Life And Better Sensitivity

STOP PLATE

Distributes Forces Evenly And Increase The Cycle Life

SEAT

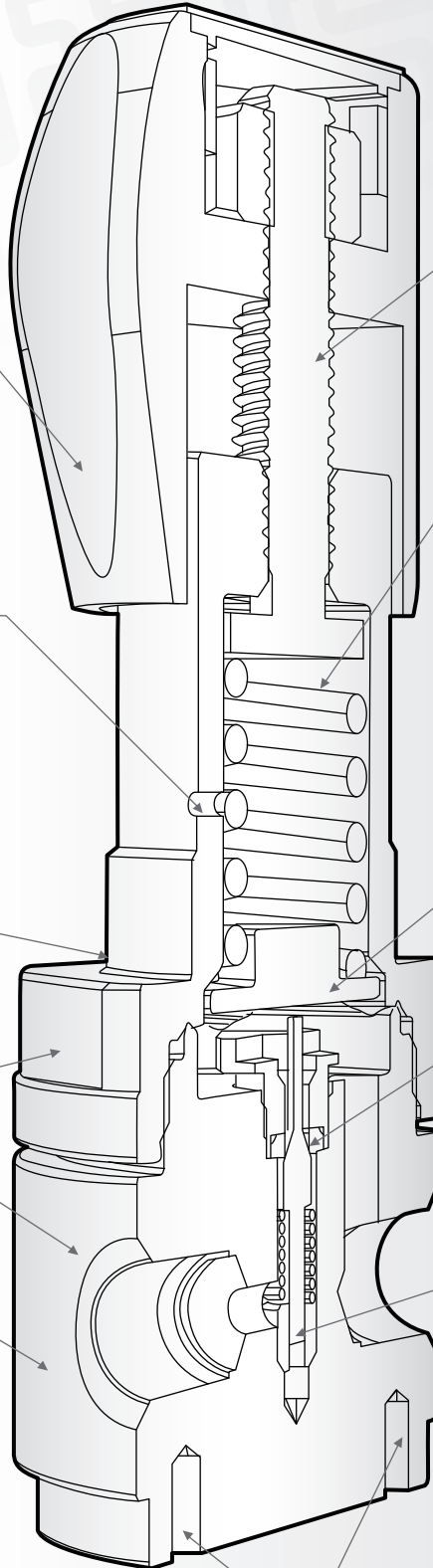
PFA Material :PFA Offers High Melt Strangth ,Stability At High Processing Temperatures,Excellent Crack And Stress Resistance,A Low Coefficient Of Friction,And Longer Life

POPPET DAMPER

The Poppet Is Designed For Stable Pressure Regulating

BOTTOM MOUNTING

Provides Easy Installation





TESTING FOR REGULATOR PERFORMANCE

Pressure reducing regulators are an excellent choice for regulating pressure applications, and used widely in gas applications for example semiconductor, Biotechnology, Gases Cylinder, Gas Cabinet, variety of equipments.





龍雲鑄造股份有限公司 Lung Yun Casting Co., Ltd

20, Gong-3 Rd., Tachia Dist., Taichung City, Taiwan
Phone : +886 426817600 Fax : +886426813474

E-mail: inquiry@lungyun.com.tw
<http://www.lungyun.com>

減壓閥 / Pressure Reducing Regulator

MODEL: RGA

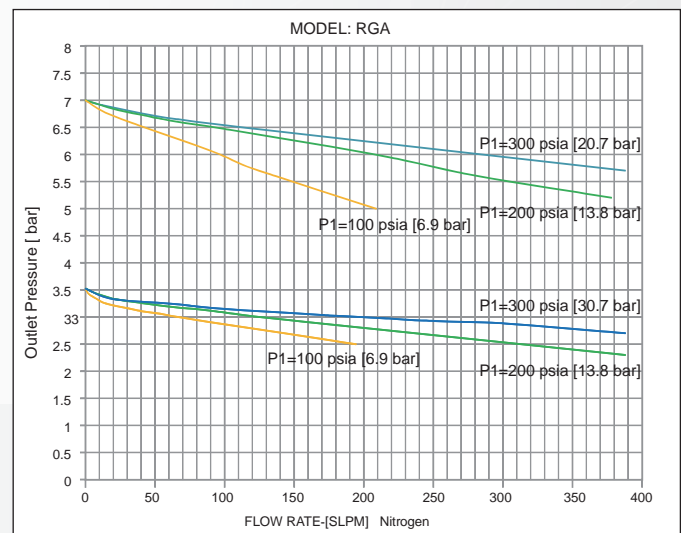


LY RGA series pressure reducing regulators are designed for gas services. With precise calculation, partial testing and in-house machining, the LY RGA series can provide more accurate regulating and longer life. In addition, the sensing system provide excellent adjusting experience and stability.

FEATURES

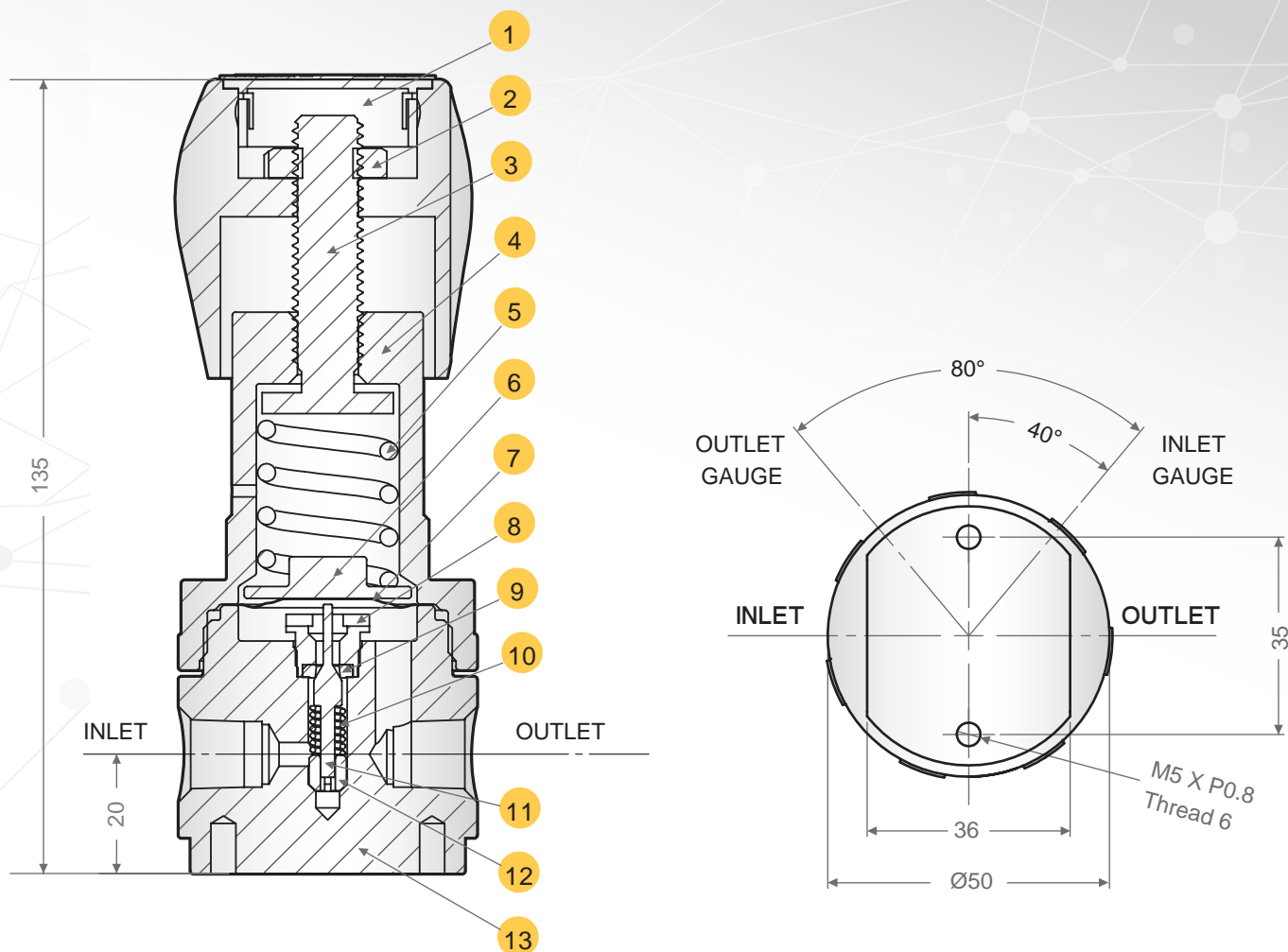
1. Compact , General Use
2. Spring -Loaded Pressure Control
3. Knob Handle Adjustment
4. Stainless Steel 316L Body Design For Easy Maintenance And Better Corrosion Resistance
5. Metal -To- Metal Diaphragm Sensing Mechanism
6. Panel Mounting Is An Option
7. OEM / ODM Available
8. Inboard Leakage: 2×10^{-8} atm cc/sec He
9. Outboard Leakage: 2×10^{-8} atm cc/sec He
10. Weight: 0.9 kg

Regulator Flow Charts



SPECIFICATIONS

Maximum Inlet Pressure	400 psig (28 bar)
	3000 psig (207 bar)
Outlet Pressure Ranges	50 psig (3.5 bar)
	100 psig (6.9 bar)
	200 psig (13.8bar)
	300 psig (20.7 bar)
	400 psig (27.6 bar)
Design Proof Pressure	150% maximum rated
Leakage	Internal: Bubble-tight
Operating Temperature	-10°C to 60°C
Flow Capacity	400 psig / 28 bar Cv = 0.2
	3000 psig / 207bar Cv = 0.06
Size	1/4"-3/8"
Connection	0.9 kg
Size & Port s	1/4" NPT x 1 port or 2 ports



MATERIAL LIST

No.	Parts Name	Material
1	Knob Handle	Nylon
2	Stem Nut	304 SS
3	Stem	Copper Alloy
4	Bonnet	316L SS
5	Range Spring	316L SS
6	Stop Plate	316L SS
7	Diaphragm	STAINLESS STEEL

No.	Parts Name	Material
8	Seat Retainer	316L SS
9	Seat	PCTFE
10	Seat Retainer	316L SS
11	Poppet	316L SS
12	Poppet Damper	PCTFE
13	Body	316L SS

REGULATOR PART NUMBER SELECTOR

Build a RGA series regulator ordering number by combining the designators in the sequence shown below.

	A	B	C	D	E	F
RGA	(1) (2)	(1) (2) (3) (4) (5)	(1)	(1) (2)	(1) (2)	(1) (2) (3) (4)

A INLET PRESSURE

- (1) 400 psig
- (2) 3000 psig

FLOW CAPACITY

- (1) Cv=0.2
- (2) Cv=0.06

B OUTLET PRESSURE RANGES

- (1) 50 : 0 ~ 50 psig
- (2) 100 : 0 ~ 100 psig
- (3) 200 : 0 ~ 200 psig
- (4) 300 : 0 ~ 300psig
- (5) 400 : 0 ~ 400psig

C INLET AND OUTLET PORT TYPE

- (1) NPT

D INLET AND OUTLET PORT SIZE

- (1) 1/4"
- (2) 3/8"

E BODY MATERIAL

- (1) 316L SS
- (2) 316 SS

F MODIFICATIONS

- (1) Inlet gauge port at 90°
- (2) Outlet gauge port at 90°
- (3) Outlet gauge ports at 80°
- (4) No Gauge



龍雲鑄造股份有限公司 Lung Yun Casting Co., Ltd

20, Gong-3 Rd., Tachia Dist., Taichung City, Taiwan
Phone : +886 426817600 Fax : +886426813474

E-mail: inquiry@lungyun.com.tw
<http://www.lungyun.com>

二段式減壓閥 / Two Stage Pressure Reducing Regulator

MODEL: RHA



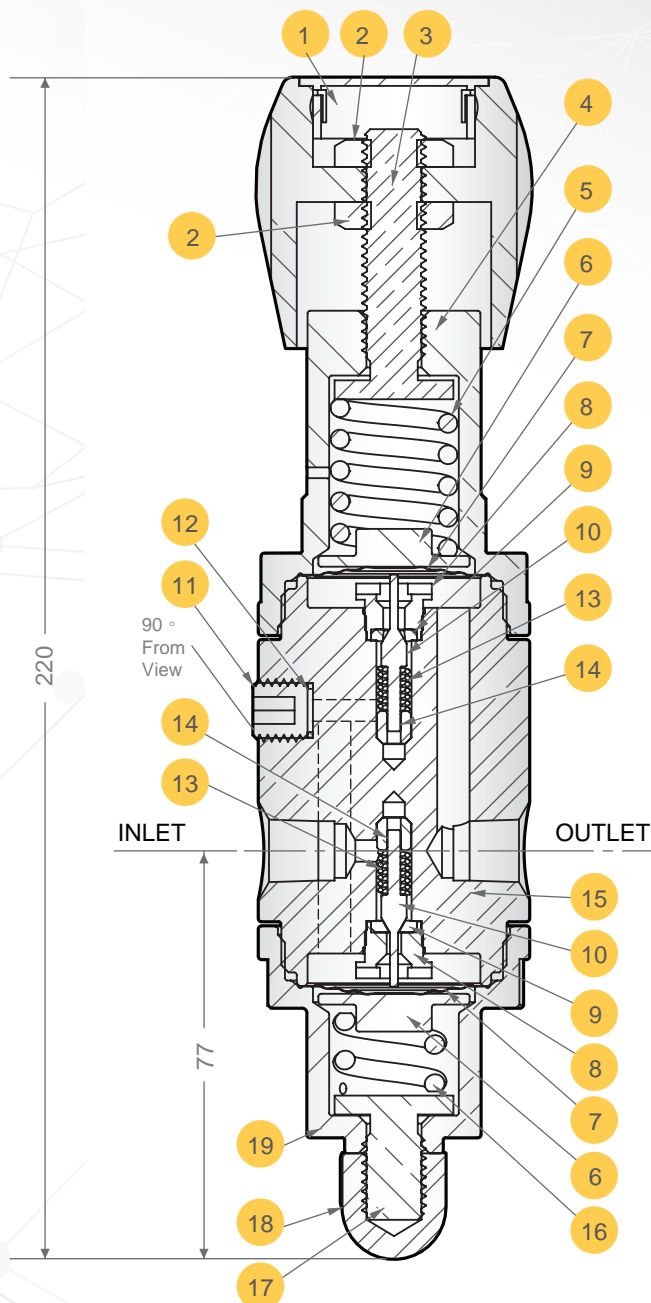
LY RHA two-stage regulator series is designed for use in applications with wide variations between inlet and outlet pressure. In addition, due to the instability of the inlet pressure, the supply-pressure effect will cause unstable delivery pressure. LY two-stage regulator series can minimize this effect and maintain consistent pressure supply.

FEATURES

1. Compact , General Use
2. Spring -Loaded Pressure Control
3. Knob Handle Adjustment
4. Available in stainless steel and brass for different application use and cost consideration
5. Metal -To- Metal Diaphragm Sensing Mechanism
6. Supply Pressure Effect of approximately 0.05 psig per 100 psig source pressure change
7. Panel Mounting is an option

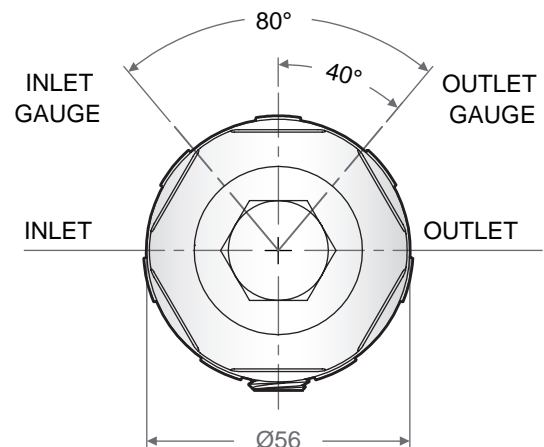
SPECIFICATIONS

Maximum Inlet Pressure	3000 psig (248 bar)
Outlet Pressure Ranges	0~50 psig (3.4 bar)
	0~100 psig (6.9 bar)
	0~200 psig (13.8 bar)
Design Proof Pressure	150% maximum rated
Inboard Leakage	2×10^{-8} atm cc/sec He
Outboard leakage	2×10^{-8} atm cc/sec He
Across-seat Leakage	2×10^{-8} atm cc/sec He
Operating Temperature	-10°C to 60°C
Flow Capacity	Cv = 0.06
Size	1/4"
Connection	NPT or VCR
Ports	1/4" female NPT Inlet, Outlet, and gauge ports
Weight	1.6 kg



MATERIAL LIST

No.	Parts Name	Material
1	Knob Handle	Nylon
2	Stem Nut	304 SS
3	2nd Stage Stem	Copper Alloy
4	2nd Stage Body Cap	316L SS/316/BRASS
5	2nd Stage Range Spring	316L SS
6	Stop Plate	316L SS
7	Diaphragm	Stainless Steel 316
8	Seat Retainer	316 SS
9	Seat	PCTFE
10	Poppet	316L SS
11	Plug	316L SS
12	Gaske	PTFE
13	Poppet Spring	316L SS
14	Poppet Damper	PCTFE
15	Body	316L SS/316/BRASS
16	1st Stage Range Spring	316L SS
17	1st Stage Stem	Copper Alloy
18	Antitamper Nut	304SS
19	1st Stage Body Cap	316L SS/316/BRASS



REGULATOR PART NUMBER SELECTOR

Build a RHA series regulator ordering number by combining the designators in the sequence shown below.

	A	B	C	D	E	F
RHA	(1)	(1) (2) (3)	(1)	(1)	(1) (2) (3)	(1) (2) (3)

A INLET PRESSURE

(1) 3000 psig Cv=0.06

B OUTLET PRESSURERANGES

(1) 50: 0 ~ 50 psig
 (2) 100: 0 ~ 100 psig
 (3) 200: 0 ~ 200 psig

C INLET AND OUTLET PORT TYPE

(1) NPT
 (2) VCR

D INLET AND OUTLET PORT SIZE

(1) 1/4"

E MODIFICATIONS

(1) Inlet gauge port
 (2) No Gauges
 (3) 2 gauge ports

F BODY MATERIAL

(1) 316L SS
 (2) 316 SS
 (3) BRASS



龍雲鑄造股份有限公司 Lung Yun Casting Co., Ltd

20, Gong-3 Rd., Tachia Dist., Taichung City, Taiwan
Phone : +886 426817600 Fax : +886426813474

E-mail: inquiry@lungyun.com.tw
<http://www.lungyun.com>

高流量 / High-Flow Pressure Regulator

MODEL: RLA



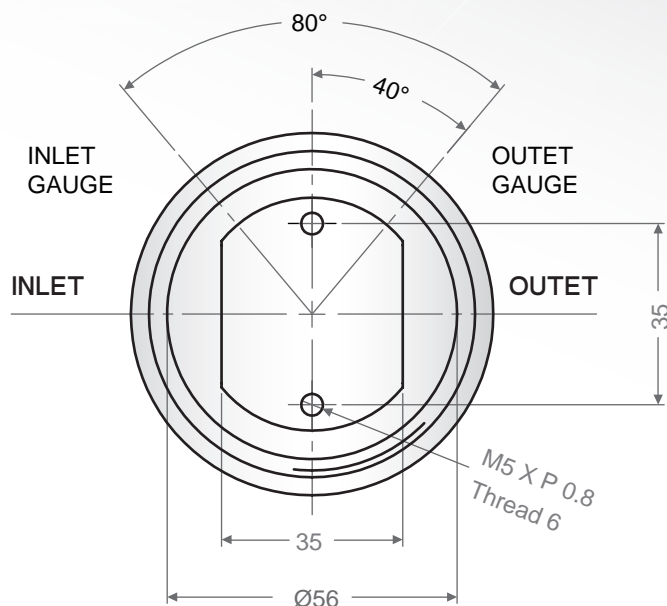
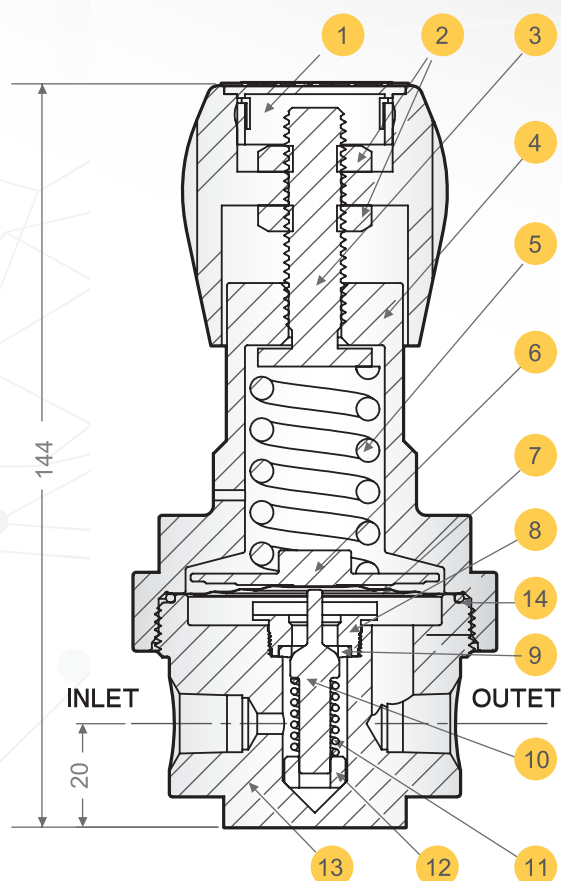
LY RLA high flow series pressure-reducing regulators are designed for gas services. With precise calculation, practical testing, and in-house machining, the LY RLA series can provide more accurate regulating and longer life. In addition, the sensing system provide excellent adjusting experience and stability.

FEATURES

1. Compact , General Use
2. Spring -Loaded Pressure Control
3. Knob Handle Adjustment
4. Available in stainless steel and brass for different application use and cost consideration
5. Metal -To- Metal Diaphragm Sensing Mechanism
6. Panel Mounting Is An Option
7. OEM / ODM Available

SPECIFICATIONS

Maximum Inlet Pressure	400 psig (28 bar)
Outlet Pressure Ranges	0~50 psig (3.4 bar)
	0~100 psig (6.9 bar)
	0~200 psig (13.8 bar)
Design Proof Pressure	150% maximum rated
Inboard Leakage	2×10^{-8} atm cc/sec He
Outboard leakage	2×10^{-8} atm cc/sec He
Across-seat Leakage	Bubble tight
Operating Temperature	-10°C to 60°C
Flow Capacity	Cv = 1
Size	1/4"-1/2"
Connection	NPT
Ports	1/4" female NPT Inlet, Outlet, and gauge ports
Weight	0.9 kg



MATERIAL LIST

No.	Parts Name	Material
1	Knob Handle	Nylon
2	Stem Nut	304 SS
3	Stem	Copper Alloy
4	Bonnet	316L SS/ 316/ BRASS
5	Range Spring	316L SS
6	Stop Plate	316L SS
7	Diaphragm	STAINLESS STEEL 316

No.	Parts Name	Material
8	Seat Retainer	316 SS
9	Seat	PCTFE
10	Poppet	316L SS
11	Spring	316 SS
12	Poppet Damper	PCTFE
13	Body	316L SS/ 316/ BRASS
14	O-ring	Viton

REGULATOR PART NUMBER SELECTOR

Build a RLA series regulator ordering number by combining the designators in the sequence shown below.

	A	B	C	D	E	F
RLA	(1)	(1) (2) (3)	(1)	(1) (2) (3)	(1) (2)	(1) (2) (3)

A INLET PRESSURE

(1) 400 psig Cv=1

B OUTLET PRESSURERANGES

(1) 50: 0 ~ 50 psig

(2) 100: 0 ~ 100 psig

(3) 200: 0 ~ 200 psig

C INLET AND OUTLET PORT TYPE

(1) NPT

D INLET AND OUTLET PORT SIZE

(1) 1/4"

(2) 3/8"

(3) 1/2"

E MODIFICATIONS

(1) Inlet gauge port

(2) No Gauges

F BODY MATERIAL

(1) 316L SS

(2) 316 SS

(3) BRASS



龍雲鑄造股份有限公司 Lung Yun Casting Co., Ltd

20, Gong-3 Rd., Tachia Dist., Taichung City, Taiwan
Phone : +886 426817600 Fax : +886426813474

E-mail: inquiry@lungyun.com.tw
<http://www.lungyun.com>

背壓閥 / Back Pressure Regulator

MODEL: RBA



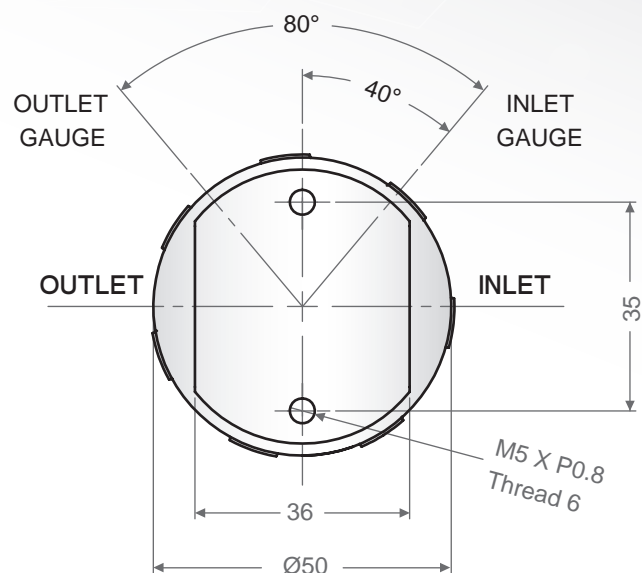
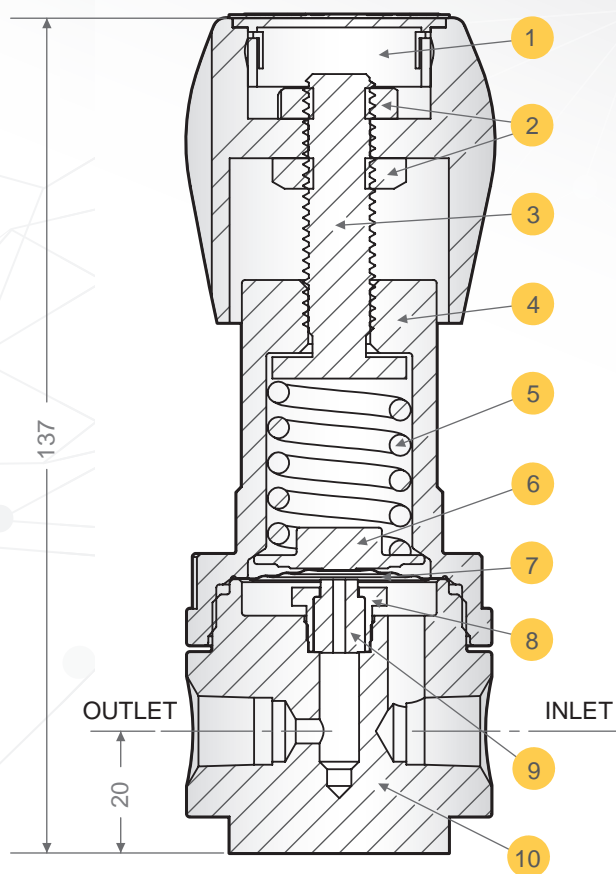
LY RBA backpressure regulator series is designed for regulating the upstream pressure of a gas in response to changes in upstream pressure. Compared to pressure relief valve, LY back pressure regulator series can provide high precision and steady pressure control for your demand gas application. Moreover, LY backpressure regulator series can be used in a wide flow range upon your request.

FEATURES

1. Compact , General Use
2. Spring -Loaded Pressure Control
3. Knob Handle Adjustment
4. Available in stainless steel and brass for different application use and cost consideration
5. Metal -To- Metal Diaphragm Sensing Mechanism
6. Panel Mounting Is An Option
7. OEM / ODM Available

SPECIFICATIONS

Controlled Pressure Ranges	0~50 psig (3.4 bar)
	0~100 psig (6.9 bar)
	0~200 psig (13.8 bar)
Design Proof Pressure	150% maximum rated
Inboard Leakage	2×10^{-8} atm cc/sec He
Outboard leakage	2×10^{-8} atm cc/sec He
Across-seat Leakage	Bubble tight
Operating Temperature	-10°C to 60°C
Flow Capacity	Cv = 0.2
Size	1/4"
Connection	NPT
Ports	1/4" female NPT Inlet, Outlet, and gauge ports
Weight	0.9 kg



MATERIAL LIST

No.	Parts Name	Material
1	Knob Handle	Nylon
2	Stem Nut	304 SS
3	Stem	Copper Alloy
4	Bonnet	316L SS/ 316 SS/ BRASS
5	Range Spring	316L SS

No.	Parts Name	Material
6	Stop Plate	316L SS
7	Diaphragm	STAINLESS STEEL 316
8	Seat Retainer	316 SS
9	Seat	PCTFE
10	Body	316L SS/ 316 SS/ BRASS

REGULATOR PART NUMBER SELECTOR

Build a RBA series regulator ordering number by combining the designators in the sequence shown below.

	A	B	C	D	E
RBA	(1) (2) (3)	(1) (2)	(1) (2)	(1) (2)	(1) (2) (3)

A CONTROLLED PRESSURERANGES

- (1) 50: 0 ~ 50 psig
- (2) 100: 0 ~ 100 psig
- (3) 200: 0 ~ 200 psig

C INLET AND OUTLET PORT SIZE

- (1) 1/4"
- (2) 3/8"

E BODY MATERIAL

- (1) 316L SS
- (2) 316 SS
- (3) BRASS

B INLET AND OUTLET PORT TYPE

- (1) NPT
- (2) VCR Gland, no nuts

D MODIFICATIONS

- (1) Inlet gauge port at 90°
- (2) No Gauges